

Breakdown Sheet

Actor Replacement - *Nuke, Neat Video*



Denoising, Green Screen Keying, Edge Treatment, 2.5D Relighting, Colour Correction, Eyeline Fix, Dress Resize, Focus Matching, Background Reconstruction, Roto, Grain Matching

Pirates - *Nuke*



Paintout, Multipass Compositing, FX Element Colour Correction, Focus Matching, Motion Blur, Lens Distortion, Roto, Grain Matching

Digital Gore - *Nuke, V-Ray for Nuke*



Look Development, CG Blade Animation, Texturing, and Lighting, Multipass Compositing, Gore Elements Integration, Matchmoving, Roto, Colour Correction, Focus Matching, Motion Blur, Grain Matching

Ethereal Effects - *Nuke*



Look Development, Green Screen Keying, Edge Treatment, Despill, Colour Grading, 2D Elements Integration, Retiming, Warping, Matchmoving, Roto, Focus Matching, Grain Matching

Black Box - *Nuke*



Multipass Compositing, Roto, Colour Correction, Focus Matching, Grain Matching

Muzzle Fire - *Nuke*



Muzzle Fire, Smoke, & Sparks Integration, 2.5D Relighting, Focus Matching, Grain Matching

Leg Paintout - *Nuke, Mocha*



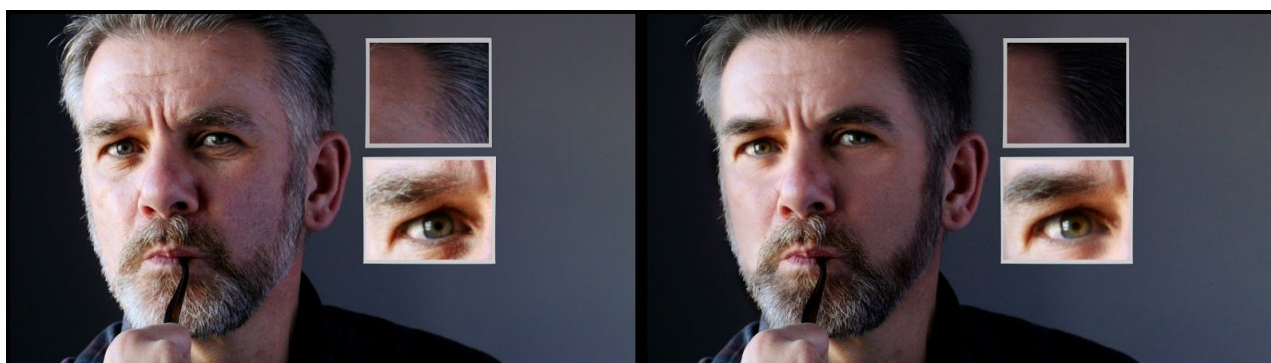
3D Camera Tracking, UV Unwrapping, UV Paintout, 3D Projection, Colour Correction, Roto, 2.5D Planar Tracking for Cardboard Sign, Text Paintout, Sign Replacement, Grain Matching

Set Extension - *Nuke, SilhouetteFX*



2D Point Tracking, Matte Painting Integration, Matchmoving, Perspective Work, 2.5D Relighting, House Paintout, Colour Correction, Focus Matching, Grain Matching

Digital Makeup - *Nuke, Mocha*



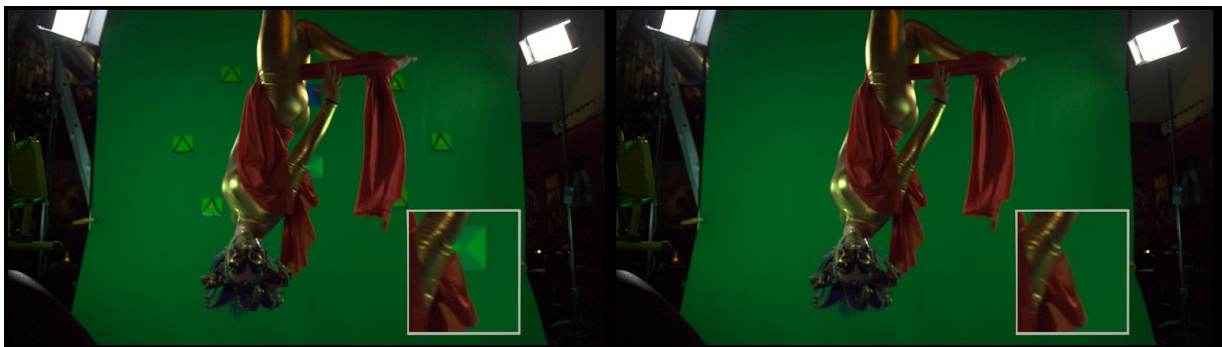
2.5D Planar Tracking (Mocha), De-aging, Warping, Color Correction, Paintouts, Focus Matching, Grain Matching

Screen Burn In - *Nuke, Mocha*



2.5D Planar Tracking, Markers Paintout, Reflection Reconstruction, Layout Design, Element Retiming, 2D Elements Integration, Interactive Light, Focus Matching, Grain Matching

Marker Removal - *Nuke*



2D Point Tracking, Paintouts, Relighting, Roto, Grain Matching

Articulate Roto - *SilhouetteFX*



Plate, Shapes/Splines, Alpha

Wall Replacement - Nuke



3D Camera Tracking, 3D Projection, Graffiti Integration, Weathering, Relighting, Colour Correction, Roto, Motion Blur, Focus Matching, Grain Matching